

INVERTER WALL MOUNTED TYPE

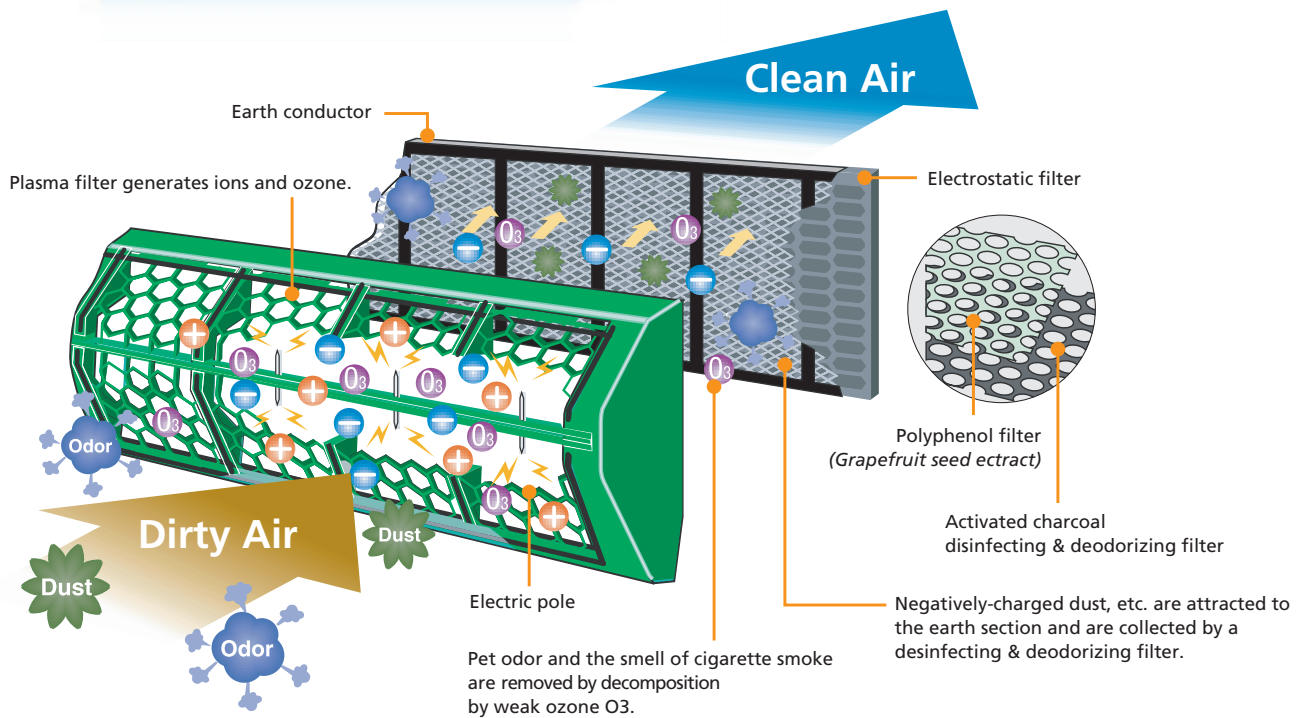
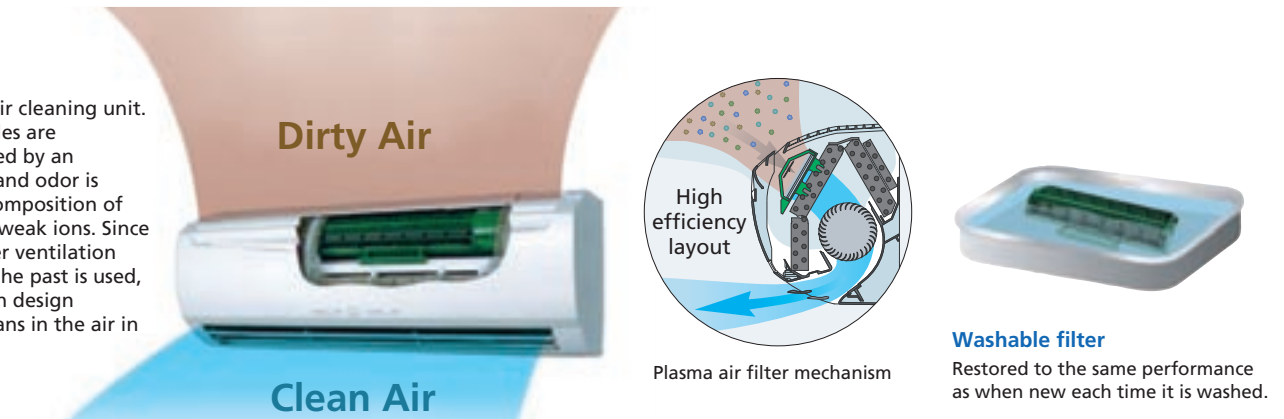
PLASMA AIR CONDITIONER



Original plasma air cleaning unit effectively cleans the air in the room.

Plasma unit

Mounts a plasma air cleaning unit. Minute dust particles are thoroughly collected by an electrostatic filter and odor is suppressed by decomposition of foul odors by very weak ions. Since a filter with a lower ventilation resistance than in the past is used, high dust collection design simultaneously cleans in the air in the room.



Plasma air cleaner quickly removes small dust particles and odors.

Collects dirt such as...

House dust / Pet fur and dander / Cigarette smoke / Mite carcass / Mold spore / Pollen

Absorbs odors such as...

Smell of cigarette smoke / Pet odor / Kitchen garbage smell / Perspiration and body odor

New



ASYSB09LD

Hi-COP:4.44(W/W)

● 2.60kW / 8,900BTU/h

● 3.60kW / 12,300BTU/h

New



For ASYSB09/12LD



For ASYSB18/24LD



ASYSB12LD

Hi-COP:3.93(W/W)

● 3.50kW / 11,900BTU/h

● 4.80kW / 16,400BTU/h



ASYSB18LD

Hi-COP:—(W/W)

● 5.20kW / —BTU/h

● —kW / —BTU/h



ASYSB24LD

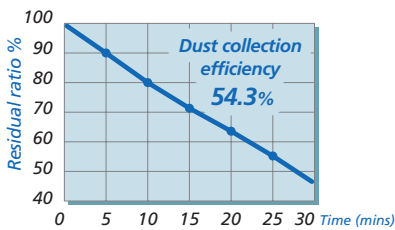
Hi-COP:—(W/W)

● 7.10kW / 24,200BTU/h

● 8.10kW / 27,600BTU/h

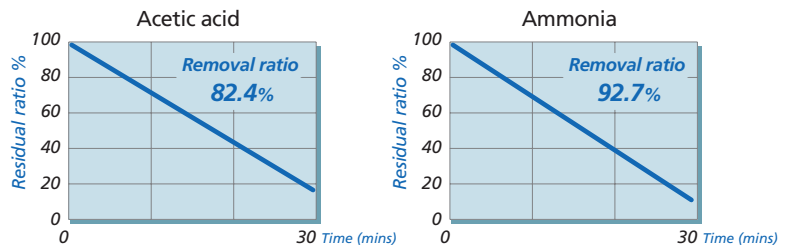
*The following contents apply to ASYSB09/12/18LD models.

Dust collection performance



Test method: JEM 1417 Test room: 30m³, sealed room
Measurement conditions: Cigarette smoke (5 cigarettes burned simultaneously)

Deodorizing performance



Test method: JEM1467 Test room : 1m³, acryl sealed box
Measurement method: Cigarette smoke (5 cigarettes burned simultaneously)

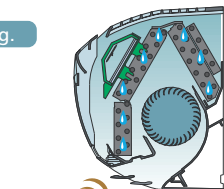
Inner drying operation prevent growth of mold fungus and bad odor.

This model is equipped with an inner drying function. After the power is turned off, the dry operation starts inside the air conditioner.

Covered with beading.

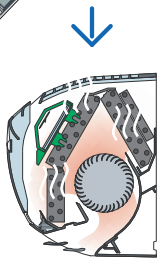
Bacteria grows in beading, and it causes bad odor.

After operation ends, start approximately 30 minutes speed cleaning operation by merely pressing the COIL DRY button.



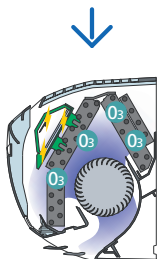
Removes moisture.

Drying operation for approx. fifteen minutes.



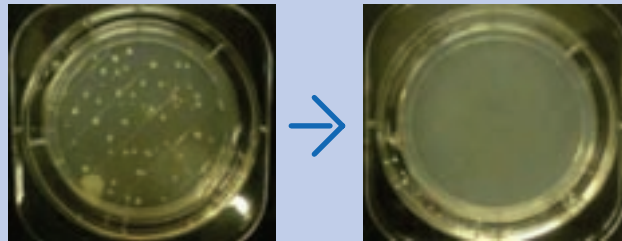
Sterilization.

Ozone sterilizing operation for approx. fifteen minutes.



"Inner drying operation" and "ozone sterilizing operation" keep the inside of the air conditioner clean at all times. That's why air from the air conditioner is always clean and high efficiency is realized.

Sterilization effect by Polyphenol ceraglaze



The undiluted solution of the specimen was made the specimen fluid and suspensoid 0.1ml (approximately 107CFU/ml) of the test bacteria was inoculated.

Tested by KITAZATO environment science center Experiment bacteria: Staphylococcus Aureus/Escherichia coil Test NO. :15-0253 Test condition: at 20degrees C/24hour action

Specifications

Item	Model No.	WALL MOUNTED TYPE				
		Indoor Unit	ASYSB09LD	ASYSB12LD	ASYSB18LD	ASYSB24LD
Item		Outdoor Unit	AOYS09LD	AOYS12LD	AOYS18LD	AOYS24LD
Rank			A / A	A / A	B / A	A / A
Capacity	Cooling	kW	2.60(0.5-3.7)	3.50(0.9-4.3)	5.20	7.10
			Heating	3.60(0.5-6.1)	4.80(0.9-6.7)	*
	Cooling	BTU/h	8,900	11,900	*	24,200
			Heating	12,300	16,400	*
Moisture Removal		l/h	1.3	1.8	*	*
Room Air Circulation (High)	Inner	m ³ /h	560	595	*	*
			Outer	2,060	1,850	*
Input Power		W/Hz	230/1/50	230 / 1/ 50	*	*
Running Current	Cooling	A	2.90	4.30	*	*
			Heating	3.90	5.50	*
Power Consumption	Cooling	kW	0.61	0.91	*	*
			Heating	0.81	1.22	*
EER			4.26	3.85	*	*
COP			4.44	3.93	*	*
Dimensions H x W x D	Inner	mm	283x790x230	283x790x230	283x790x230	320x998x228
		kg(lbs)	9.5(21)	9.5(21)	*	*
		Outer	mm	540x790x290	540x790x290	578x790x300
Net Weight	Outer	kg(lbs)	34(75)	36(80)	*	*
Connection Method			Flare	Flare	Flare	Flare
Connection Pipe Size (Small/Large)	mm		6.35/ 9.52	6.35/9.52	6.35/12.70	*
			20(15)	20(15)	20(15)	*
Max Pipe Length /Height Difference	m		15	15	15	*
Permissible Range of Outdoor Temp.	Cooling	°C	-10-43	-10-43	-10-43	*
			Heating	-15-24	-15-24	-15-24
Refrigerant			R410A	R410A	R410A	R410A

INVERTER WALL MOUNTED TYPE

New



New Small



For ASYA07I09LC



For ASYA12LC



For ASYA14I18LC



ASYA07LC Rank A i PAM
 Hi-COP:—(W/W)
 C 2.20kW / 7,200BTU/h
 H 3.00kW / 10,200BTU/h

ASYA09LC Rank A i PAM
 Hi-COP:4.26(W/W)
 C 2.60kW / 8,900BTU/h
 H 3.60kW / 12,300BTU/h

ASYA12LC Rank A V PAM
 Hi-COP:3.87(W/W)
 C 3.50kW / 11,900BTU/h
 H 4.80kW / 16,400BTU/h

ASYA14LC Rank A ALL DC V PAM
 Hi-COP:3.86(W/W)
 C 4.20kW / 14,300BTU/h
 H 5.60kW / 19,100BTU/h

ASYA18LC Rank A ALL DC V PAM
 Hi-COP:3.61(W/W)
 C 5.20kW / 17,700BTU/h
 H 6.25kW / 21,300BTU/h

Air conditioner filter features



Apple-catechin filter AF

Fine dust, invisible mold spores, and harmful microorganisms are absorbed onto the filter by static electricity, and further growth is inhibited and deactivated by the polyphenol ingredient extracted from apples.

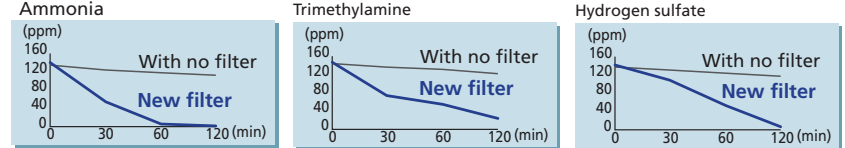


Long-life* Ion deodorization filter Ion

The filter deodorizes by powerfully decomposing absorbed odors using the oxidizing and reducing effects of ions generated by the ultra-fine-particle ceramic. (* The filter can be used for approximately 3 years if it is washed under water to restore its surface action when it is dirty.)



Deodorizing effect (Odor reduction rate)



Testing organization : Environmental Sanitary Inspection Center Test method : Deodorization Test

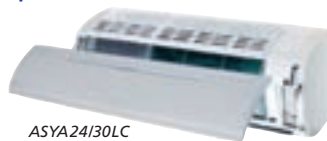
Easy maintenance

Easy maintenance and always clean.
 Troublesome maintenance has been made easy.
 Since the front panel is easy to remove, maintenance is also easy.

Open panel



ASYA07I09/12/14/18LC



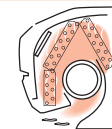
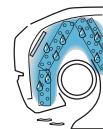
ASYA24I30LC

Inner drying operation

This model is equipped with an inner drying function. After the power is turned off, the dry operation starts inside the air conditioner. This prevents the growth of mold and bacterial inside the air conditioner.

During dewcondensation

Approx. 20 mins Drying



Specifications

Model No.		WALL MOUNTED TYPE							
Item	Indoor Unit	ASYA07LC	ASYA09LC	ASYA12LC	ASYA14LC	ASYA18LC	ASYA24LC	ASYA30LC	
Rank	Outdoor Unit	AOYR07LC	AOYR09LC	AOYR12LC	AOYR14LC	AOYR18LC	AOYR24LC	AOYR30LC	
Capacity	A / A	A / A	A / A	A / A	A / A	B / A	A / A	B / B	
	Cooling kW	2.10(0.5~3.0)	2.60(0.5~3.6)	3.50(0.9~4.3)	4.20(0.9~5.3)	5.20(0.9~5.7)	7.10(~8.0)	8.00(~9.0)	
	Heating kW	3.00(0.5~4.6)	3.60(0.5~5.3)	4.80(0.9~6.7)	5.60(0.9~8.4)	6.25(0.9~9.1)	8.10(~10.0)	9.00(~11.0)	
	Cooling BTU/h	7,200	8,900	11,900	14,300	17,700	24,200	27,300	
Moisture Removal	Heating BTU/h	10,200	12,300	16,400	19,100	21,300	27,600	30,700	
	l/h	*	1.3	1.8	2.1	2.8	3.0	3.6	
Room Air Circulation (High)	Inner m ³ /h	*	595	635	700	700	1,100	1,100	
	Outer m ³ /h	*	*	1,850	1,910	2,000	2,040	3,600	
Input Power	V/ø/Hz	230/1/50	230/1/50	230/1/50	230/1/50	230/1/50	230/1/50	230/1/50	
Running Current	Cooling A	*	3.20	4.30	5.00	7.60	9.70	11.70	
	Heating A	*	4.00	5.60	6.40	7.70	9.80	11.60	
Power Consumption	Cooling kW	*	0.655	0.92	1.11	1.72	2.21	2.66	
	Heating kW	*	0.845	1.24	1.45	1.73	2.24	2.64	
EER	Cooling	-	3.97	3.80	3.78	3.02	3.21	3.01	
COP	Heating	-	4.26	3.87	3.86	3.61	3.62	3.41	
	mm	275x790x215	275x790x215	275x790x215	275x790x215	275x790x215	320x998x228	320x998x228	
Dimensions H x W x D	Inner kg(lbs)	9(20)	9(20)	9(20)	9(20)	9(20)	16(35)	16(35)	
	Outer mm	540x660x290	540x660x290	540x790x290	578x790x300	578x790x300	578x790(+66)x315	830x900x330	
Net Weight	Outer kg(lbs)	34(75)	34(75)	37(82)	40(88)	40(88)	44(97)	62(137)	
	mm	Flare	Flare	Flare	Flare	Flare	Flare	Flare	
Connection Method	mm	6.35/9.52	6.35/9.52	6.35/9.52	6.35/12.70	6.35/12.70	6.35/15.88	9.52/15.88	
Connection Pipe Size (Small/Large)	m	20(15)	20(15)	20(15)	20(15)	20(15)	20(15)	50(15)	
Max Pipe Length /Height Difference	°C	15	15	15	15	15	20	30	
Permissible Range of Outdoor Temp.	Cooling	10~43	10~43	10~43	-10~43	-10~43	-10~43	-10~43	
	Heating	-15~24	-15~24	-15~24	-15~24	-15~24	-15~24	-15~24	
Refrigerant		R410A	R410A	R410A	R410A	R410A	R410A	R410A	



New
Flat panel



for ASYA24LC



for ASYA30LC



AS YA24LC Rank **A** ALL DC V PAM
 Hi-COP:3.62(W/W)
 ● 7.10kW/24,200BTU/h
 ● 8.10kW/27,600BTU/h

AS YA30LC Rank **A** ALL DC V PAM
 Hi-COP:3.41(W/W)
 ● 8.00kW/27,300BTU/h
 ● 9.00kW/30,700BTU/h

*The following contents apply to ASYA24LC models.

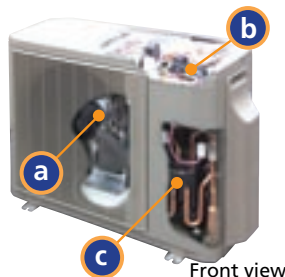
All DC



DC fan motor

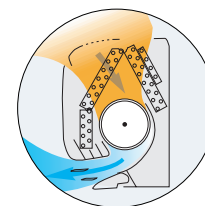
Heat exchange capacities 20% up compared to conventional models

- a** DC fan motor
- b** V-PAM control
V-PAM technology makes a compressor more powerful.
- c** DC scroll compressor
More compact compared with conventional model



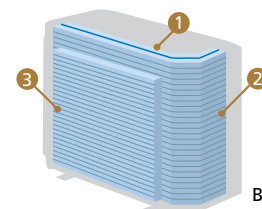
Front view

Energy saving Rank A



High efficiency layout

Large air flow and quiet operation by new air flow path

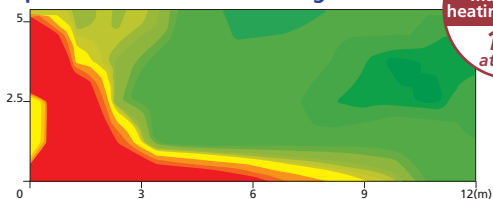


New 3-row heat exchange system

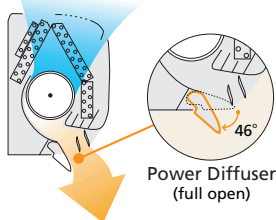
Back view

Power Diffuser

"Strong vertical air flow" provides powerful floor level heating.



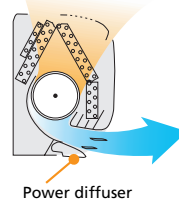
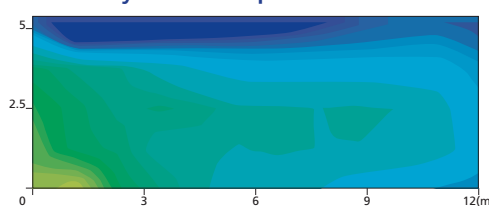
No.1 maximum heating capacity
10kW attained



Power Diffuser (full open)

33 32 31 30 29 (°C)
 Outside air conditions: 2 °C 60%
 Operation contents: Heating,
 Set temperature (Max set temp)
 30 °C, Air flow Hi, Air direction
 downward and front

"Healthy horizontal air flow" does not blow cool air directly at the occupants in the room.



Power diffuser

15 16 17 18 (°C)
 Outside air conditions: 35 °C 40%
 Operation contents: Cooling,
 Set temperature (Min set temp)
 18 °C, Air flow Hi,
 Air direction downward and front

Compact design

Conventional model



(unit:mm) H320 x W1,120 x D220



H900 x W900 x D350

70kg



New model



H320 x W998 x D228



H578 x W790 x D315

44kg

WALL MOUNTED TYPE

Easy-to-install and easy-to-operate wall mounted type for a comfortable life.



(ASY7FB/9FB/12FB : Except "Auto Changeover")



ASY7FB
C 2.25kW / 7,700BTU/h

ASY9FB
C 2.75kW / 9,400BTU/h

ASY12FB
C 3.40kW / 11,600BTU/h

ASY7UB
C 2.20kW / 7,500BTU/h
H 2.30kW / 7,800BTU/h

ASY9UC
C 2.60kW / 8,900BTU/h
H 2.95kW / 10,100BTU/h

ASY12UC
C 3.25kW / 11,100BTU/h
H 3.95kW / 13,500BTU/h

Specifications

Model No.		WALL MOUNTED TYPE							
Item	Indoor Unit	ASY7FB	ASY7UB	ASY9FB	ASY9UC	ASY12FB	ASY12UC	ASY9UB	ASY12UB
Rank	Outdoor Unit	AOY7FB	AOY7UB	AOY9FB	AOY9UC	AOY12FB	AOY12UC	AOY9UB	AOY12UB
		C	D / D	D	E / C	E	E / D	A / A	A / A
Capacity	Cooling	kW	2.25	2.20	2.75	2.60	3.40	2.90	3.70
	Heating	kW	-	2.30	-	2.95	-	3.05	4.00
	Cooling	BTU/h	7,700	7,500	9,400	8,900	11,600	9,900	12,600
	Heating	BTU/h	-	7,800	-	10,100	-	13,500	13,600
Moisture Removal		l/h	1.0	1.0	1.3	1.3	1.8	1.3	1.9
Room Air Circulation (High)	Inner	m ³ /h	380	380	540	540	540	600	700
	Outer	m ³ /h	1,350	1,350	1,680	1,350	1,470	1,470	1,710
Input Power		V/o/Hz	230/1/50	230/1/50	230/1/50	230/1/50	230/1/50	230/1/50	230/1/50
Running Current	Cooling	A	3.70	3.90	4.70	4.80	6.20	5.90	5.00
	Heating	A	-	3.60	-	4.10	-	5.60	4.60
Power Consumption	Cooling	kW	0.80	0.83	1.05	1.07	1.33	1.35	1.13
	Heating	kW	-	0.75	-	0.90	-	1.28	1.04
EER	Cooling	kW/kW	2.81	2.65	2.62	2.43	2.56	2.41	3.27
COP	Heating	kW/kW	-	3.07	-	3.28	-	3.09	3.85
Dimensions H x W x D	Inner	mm	257x808x187	257x808x187	257x808x187	257x808x187	257x808x187	257x790x215	275x790x215
	Outer	mm	535x650x250	535x650x250	535x695x250	535x650x250	535x695x250	535x695x250	535x780x250
Net Weight	Inner	kg(lbs)	8(18)	8(18)	8(18)	8(18)	8(18)	9(20)	9(20)
	Outer	kg(lbs)	25(55)	26(57)	30(66)	28(82)	32(71)	30(66)	35(77)
Connection Method			Flare	Flare	Flare	Flare	Flare	Flare	Flare
Connection Pipe Size (Small/Large)		mm	6.35/9.52	6.35/9.52	6.35/9.52	6.35/9.52	6.35/9.52	6.35/9.52	6.35/9.52
Max Pipe Length /Height Difference		m	10	10	15	15	15	15	15
		m	5	5	8	8	8	8	8
Permissible Range of Outdoor Temp.	Cooling	°C	21~43	21~43	21~43	21~43	21~43	21~43	21~43
	Heating	°C	-	-5~24	-	-5~24	-	-5~24	-5~24
Refrigerant			R410A	R410A	R410A	R410A	R410A	R410A	R410A

CEILING WALL TYPE

New intelligent and beautiful air conditioner matches any scene.



(AWY18/24FA/18/24/30FB : Except "Auto Changeover")



AWY18FA Rank A
C 5.40kW / 18,400BTU/h

AWY18FB
C 5.40kW / 18,400BTU/h

AWY24FA Rank A
C 6.80kW / 23,200BTU/h

AWY24FB
C 6.80kW / 23,200BTU/h

AWY30FB
C 7.90kW / 27,000BTU/h

AWY14UB
C 4.20kW / 14,300BTU/h
H 4.60kW / 15,700BTU/h

AWY18UA Rank A
C 5.40kW / 18,400BTU/h
H 5.70kW / 19,500BTU/h

AWY18UB
C 5.40kW / 18,400BTU/h
H 5.70kW / 19,500BTU/h

AWY24UA Rank A
C 6.80kW / 23,200BTU/h
H 7.40kW / 25,300BTU/h

AWY24UB
C 6.80kW / 23,200BTU/h
H 7.40kW / 25,300BTU/h

AWY30UB
C 7.90kW / 27,000BTU/h
H 8.40kW / 28,700BTU/h



(ASY9UA/12UB: Except *Program* · ASY14FB: Except *Auto Changeover*)



For ASY9UB/12UB For ASY14FB/14UB Plastic Cabinet Outdoor Unit For ASY12UB/14FB/14UB

ASY9UB Rank A
 C 2.90kW / 9,900BTU/h
 H 3.05kW / 10,400BTU/h

ASY14FB
 C 4.20kW / 14,300BTU/h

ASY12UB Rank A
 C 3.70kW / 12,600BTU/h
 H 4.00kW / 13,600BTU/h

ASY14UB
 C 4.25kW / 14,500BTU/h
 H 4.80kW / 16,400BTU/h



(ASY18FA/ASY18U/24FB/24UB: Except *Auto Changeover*)



For ASY18FA/18UA 18FB/18UB/24FB/24UB

For ASY30FB/30UB

ASY18FA Rank A
 C 5.40kW / 18,400BTU/h

ASY18FB
 C 5.40kW / 18,400BTU/h

ASY18UA Rank A
 C 5.40kW / 18,400BTU/h
 H 5.70kW / 19,500BTU/h

ASY18UB
 C 5.40kW / 18,400BTU/h
 H 5.70kW / 19,500BTU/h

ASY24FB
 C 6.80kW / 23,200BTU/h

ASY24UB
 C 6.80kW / 23,200BTU/h
 H 7.40kW / 25,300BTU/h

ASY30FB
 C 7.90kW / 27,000BTU/h

ASY30UB
 C 7.90kW / 27,000BTU/h
 H 8.40kW / 28,700BTU/h

WALL MOUNTED TYPE

ASY14FB AOY14FB	ASY14UB AOY14UB	ASY18FA AOY18FA	ASY18UA AOY18UA	ASY18FB AOY18FB	ASY18UB AOY18UB	ASY24FB AOY24FB	ASY24UB AOY24UB	ASY30FB AOY30FB	ASY30UB AOY30UB
C	B / A	A	A / A	C	C / D	C	C / D	C	C / D
4.20	4.25	5.40	5.40	5.40	5.40	6.80	6.80	7.90	7.90
-	4.80	-	5.70	-	5.70	-	7.40	-	8.40
14,300	14,500	18,400	18,400	18,400	18,400	23,200	23,200	27,000	27,000
-	16,400	-	19,500	-	19,500	-	25,300	-	28,700
2.0	2.0	2.0	2.0	2.0	2.0	2.5	2.5	3.0	3.0
700	700	950	950	795	800	950	970	1,040	1,040
1,755	1,670	3,200	3,200	3,400	3,200	3,200	3,200	3,320	3,320
230/1/50	230/1/50	230/1/50	230/1/50	230/1/50	230/1/50	230/1/50	230/1/50	230/1/50	230/1/50
6.60	6.10	7.30	7.30	8.50	8.30	10.60	10.60	13.00	13.00
-	5.60	-	7.00	-	8.30	-	10.50	-	13.00
1.48	1.38	1.66	1.66	1.90	1.85	2.40	2.40	2.75	2.75
-	1.27	-	1.58	-	1.85	-	2.40	-	2.75
2.84	3.08	3.25	3.25	2.84	2.92	2.83	2.83	2.87	2.87
-	3.78	-	3.61	-	3.08	-	3.08	-	3.05
275x790x215	275x790x215	320x1,120x220	320x1,120x220	320x1,120x220	320x1,120x220	320x1,120x220	320x1,120x220	320x1,120x220	320x1,120x220
9(20)	9(20)	16(35)	16(35)	16(35)	16(35)	16(35)	16(35)	16(35)	16(35)
535x780x250	535x780x250	650x830x320	650x830x320	650x830x320	650x830x320	650x830x320	650x830x320	900x900x350	900x900x350
35(77)	37(82)	51(112)	52(114)	47(103)	52(114)	59(130)	59(130)	73(161)	74(163)
Flare	Flare	Flare	Flare	Flare	Flare	Flare	Flare	Flare	Flare
6.35/12.70	6.35/12.70	6.35/15.88	6.35/15.88	6.35/15.88	6.35/15.88	9.52/15.88	9.52/15.88	9.52/15.88	9.52/15.88
15	15	20	20	20	20	20	20	30	25
8	8	8	8	8	8	8	8	15	15
21~43	21~43	21~43	-5~43	21~43	0~43	21~43	0~43	0~43	0~43
-	-5~24	-	-10~24	-	-6~24	-	-6~24	-	-6~24
R410A	R410A	R410A	R410A	R410A	R410A	R410A	R410A	R410A	R410A

Specifications

Model No.		Indoor Unit	CEILING WALL TYPE										
Item	Model No.	Indoor Unit	AWY14UB	AWY18FA	AWY18UA	AWY18FB	AWY18UB	AWY24FA	AWY24UA	AWY24FB	AWY24UB	AWY30FB	AWY30UB
Rank		Outdoor Unit	AOY14UB	AOY18FA	AOY18UA	AOY18FB	AOY18UB	AOY24FA	AOY24UA	AOY24FB	AOY24UB	AOY30FB	AOY30UB
			C / B	A	A / A	C	C / D	A	A / A	C	C / D	C	C / D
Capacity	Cooling	kW	4.20	5.40	5.40	5.40	5.40	6.80	6.80	6.80	6.80	7.90	7.90
	Heating	kW	4.60	-	5.70	-	5.70	-	7.40	-	7.40	-	8.40
	Cooling	BTU/h	14,300	18,400	18,400	18,400	18,400	23,200	23,200	23,200	23,200	27,000	27,000
	Heating	BTU/h	15,700	-	19,500	-	19,500	-	25,300	-	25,300	-	28,700
Moisture Removal		l/h	1.6	2.0	2.0	2.0	2.0	2.5	2.5	2.5	2.5	3.0	3.0
Room Air Circulation (High)	Inner	m ³ /h	650	900	900	760	760	1,050	1,050	900	900	950	950
	Outer	m ³ /h	1,600	3,200	3,200	3,400	3,200	3,320	3,320	3,200	3,200	3,320	3,320
Input Power		W/Hz	230/1/50	230/1/50	230/1/50	230/1/50	230/1/50	230/1/50	230/1/50	230/1/50	230/1/50	230/1/50	230/1/50
Running Current	Cooling	A	6.50	7.30	7.30	8.50	8.30	9.40	9.40	10.60	10.60	13.00	13.00
	Heating	A	5.70	-	7.00	-	8.30	-	9.00	-	10.50	-	13.00
Power Consumption	Cooling	kW	1.45	1.66	1.66	1.90	1.85	2.12	2.12	2.40	2.40	2.75	2.75
	Heating	kW	1.28	-	1.58	-	1.85	-	2.05	-	2.40	-	2.75
EER	Cooling		2.90	3.25	3.25	2.84	2.92	3.21	3.21	2.83	2.83	2.87	2.87
COP	Heating	kW/kW	3.59	-	3.61	-	3.08	-	3.61	-	3.08	-	3.05
Dimensions H x W x D	Inner	mm	270x1,150x285	270x1,150x285	270x1,150x285	270x1,150x285	270x1,150x285	270x1,150x285	270x1,150x285	270x1,150x285	270x1,150x285	270x1,150x285	270x1,150x285
	Outer	kg(lbs)	16(35)	16(35)	16(35)	16(35)	16(35)	16(35)	16(35)	16(35)	16(35)	16(35)	16(35)
Net Weight	Inner	mm	530x750x250	650x830x320	650x830x320	650x830x320	650x830x320	900x900x350	900x900x350	650x830x320	650x830x320	900x900x350	900x900x350
	Outer	kg(lbs)	35(77)	51(112)	52(114)	47(103)	52(114)	73(161)	74(163)	58(128)	59(130)	73(161)	74(163)
Connection Method			Flare	Flare	Flare	Flare	Flare	Flare	Flare	Flare	Flare	Flare	Flare
Connection Pipe Size (Small/Large)		mm	6.35/12.70	6.35/15.88	6.35/15.88	6.35/15.88	6.35/15.88	9.52/15.88	9.52/15.88	9.52/15.88	9.52/15.88	9.52/15.88	9.52/15.88
Max Pipe Length /Height Difference	Cooling	m	15	20	20	20	20	20	20	20	20	30	25
	Heating	m	8	8	8	8	8	8	8	8	8	15	15
Permissible Range of Outdoor Temp.	Cooling	°C	21~43	21~43	-5~43	21~43	0~43	21~43	-5~43	21~43	0~43	0~43	0~43
	Heating	°C	-6~24	-	-10~24	-	-6~24	-	-10~24	-	-6~24	-	-6~24
Refrigerant			R410A	R410A	R410A	R410A	R410A	R410A	R410A	R410A	R410A	R410A	R410A